

SOFTLINES WASTEWATER TESTING
TEST REPORT

Number: TURA190163671

REV01_Date: 03/ 10/ 2019

Date: 26/ 09/ 2019

Factory
 Factory's name : UTENOS TRIKOTAZAS
 Address : J. Basanavičiaus g. 122, Utena 28214, Lithuania
 Sampling Lab : Performed by UTENOS TRIKOTAZAS
 Testing Lab : Performed by Intertek Turkey

Sample type:
 Sample / Wastewater [Wastewater]
 Sample / Sludge [N/A]

Date received/Date test started: 12/ 09/ 2019

Tests conducted:

As requested by a brand program, for details refer to attached page(s).

In this Revised 01 report, additional info added for parameters under “Brominated, Chlorinated and other Flame Retardants”.

This report replaced the report no TURA190163671 dated on 29/ 09/ 2019 and must be used instead of it.

Report no TURA190163671 dated on 29/ 09/ 2019 is invalid.

Summary of test results:

Wastewater / Conventional parameters - Test items	Detection
Temperature	N/A
TSS	D
COD	D
pH	6.88
Colour [m ⁻¹] (436nm, 525nm, 620nm)	ND ND ND
BOD ₅	D
Ammonium-N	ND
Total-P	ND
AOX	ND
Sulfide	ND



SOFTLINES WASTEWATER TESTING TEST REPORT

Number: TURA190163671

Wastewater / Heavy metals - Test items	Detection
Antimony, Sb	D
Chromium, Cr (total)	ND
Cobalt, Co	ND
Copper, Cu	D
Nickel, Ni	ND
Zinc, Zn	D
Arsenic, As	ND
Cadmium, Cd	ND
Chromium (VI), Cr VI	ND
Lead, Pb	ND
Mercury, Hg	ND
Manganese, Mn	D

Test items	Detection
Heavy metals	D
Alkylphenol ethoxylates / Alkylphenols (APEOs/APs)	ND
Chlorobenzenes and Chlorotoluenes	ND
Chlorophenols	ND
Hazardous Dyes (Banned Azo, Allergenic, Carcinogenic)	ND
Brominated, Chlorinated and other Flame Retardants	D
SCCP	ND
Chlorinated And Other Solvents	ND
Organotin compounds	ND
Perfluorinated Compounds (PFCs)	ND
Phthalates	ND
Polycyclic aromatic hydrocarbons (PAHs)	ND

Note :	
ND = Not detected or result less than limit	
D = Detected <i>[please specify actual result]</i> or result above <i>limit</i>	
N/A = Not applicable	- = Did not perform
# = No comment	* = See Remark

Prepared and Checked By:



Selvihan Elidüzgün
Environmental Engineer, Ms.c.
For Intertek Testing Services Turkey

Authorized By:



Zeynep Akın
Chemical Laboratory Manager
For Intertek Testing Services Turkey

SOFTLINES WASTEWATER TESTING
TEST REPORT

Number: TURA190163671

Sample / Wastewater and Sludge

1. Conventional parameters

Parameters		Test method	Reporting Limit (Wastewater)	Wastewater
Temperature		EPA 170.1	40°C	N/A °C
TSS		SM 2540 D	50 mg/L	145 mg/L
COD		SM 5220 B, D	200 mg/L	783 mg/L
pH		EPA 150.1	6.0-9.0	6.88
Colour [m ⁻¹]	436nm	ISO 7887-B	10 m ⁻¹	ND
	525nm		7 m ⁻¹	ND
	620nm		5 m ⁻¹	ND
BOD5		SM 5210 B,D	50 mg/L	620 mg/L
Ammonium-N		SM 4500 NH3-N	10 mg/L	ND mg/L
Total-P		ISO 11885	5 mg/L	ND
AOX		ISO 9562	1 mg/L	ND
Sulfide		SM 4500-S2-D	2 mg/L	ND

Remark: ND = Not detected or result less than limit

2. Heavy metals

With reference to ISO 11885, ISO 18412, ISO 12846, ISO 17852, US EPA 200.7, US EPA 200.8, US EPA 6010c, US EPA 6020a, US EPA 218.6 and by Inductively Coupled Argon Plasma-Mass Spectrometry (ICP-MS) analysis.

Chemical substances	CAS no.	Detection Limit (Wastewater)	Detection Limit (Sludge)	Wastewater (µg/L)	Sludge (mg/kg)
Antimony, Sb	7440-36-0	1 µg/l	1 mg/kg	15	N/A
Chromium, Cr (total)	7440-47-3	1 µg/l	1 mg/kg	ND	N/A
Cobalt, Co	7440-48-4	1 µg/l	1 mg/kg	ND	N/A
Copper, Cu	7440-50-8	1 µg/l	1 mg/kg	13	N/A
Nickel, Ni	7440-02-0	1 µg/l	1 mg/kg	ND	N/A
Zinc, Zn	7440-66-6	1 µg/l	4 mg/kg	49	N/A
Arsenic, As	7440-38-2	1 µg/l	1 mg/kg	ND	N/A
Cadmium, Cd	7440-43-9	0.1 µg/l	1 mg/kg	ND	N/A
Chromium (VI), Cr VI	7440-47-3	1 µg/l	1 mg/kg	ND	N/A
Lead, Pb	7439-92-1	1 µg/l	1 mg/kg	ND	N/A
Mercury, Hg	7439-97-6	0.05 µg/l	0.006 mg/kg	ND	N/A
Manganese, Mn	7439-96-5	1 µg/l	1 mg/kg	9	N/A

Remark: ND = Not detected or result less than limit



SOFTLINES WASTEWATER TESTING
TEST REPORT

Number: TURA190163671

3. Alkylphenol ethoxylates / Alkylphenols (APEOs/APs)

With reference to ISO 18857-2/ASTM D7065, ISO 18254-1/2, and by Gas Chromatography-Mass Spectrometry (GC-MS) and Liquid Chromatography-tandem Mass Spectrometry (LC-MS-MS) analysis.

Chemical substances	CAS no.	Reporting limit (Wastewater)	Reporting Limit (Sludge)	Wastewater (µg/L)	Sludge (mg/kg)
Nonylphenol (NP), mixed isomers	104-40-5; 11066-49-2; 25154-52-3; 84852-15-3	1 µg/L	0.2 mg/kg	ND	N/A
Octylphenol (OP), mixed isomers	140-66-9; 1806-26-4; 27193-28-8	1 µg/L	0.2 mg/kg	ND	N/A
Nonylphenol ethoxylates (NPEO)	9016-45-9; 26027-38-3; 37205-87-1; 68412-54-4; 127087-87-0	1 µg/L	0.2 mg/kg	ND	N/A
Octylphenol ethoxylates (OPEO)	9002-93-1; 9036-19-5; 68987-90-6	1 µg/L	0.2 mg/kg	ND	N/A

Remark: ND = Not detected or result less than limit

4. Chlorobenzenes and Chlorotoluenes

With reference to US EPA 8260B, US EPA 8270D, and by Gas Chromatography-Mass Spectrometry (GC-MS) analysis.

Chemical substances	CAS no.	Reporting limit (Wastewater)	Reporting Limit (Sludge)	Wastewater (µg/L)	Sludge (mg/kg)
Chlorobenzene	108-90-7	0.02 µg/l	0.01 mg/kg	ND	N/A
1,2-Dichlorobenzene	95-50-1	0.02 µg/l	0.01 mg/kg	ND	N/A
1,3-Dichlorobenzene	541-73-1	0.02 µg/l	0.01 mg/kg	ND	N/A
1,4-Dichlorobenzene	106-46-7	0.02 µg/l	0.01 mg/kg	ND	N/A
1,2,4-Trichlorobenzene	120-82-1	0.02 µg/l	0.01 mg/kg	ND	N/A
1,2,3-Trichlorobenzene	87-61-6	0.02 µg/l	0.01 mg/kg	ND	N/A
1,3,5-Trichlorobenzene	108-70-3	0.02 µg/l	0.01 mg/kg	ND	N/A
Tetrachlorobenzene	12408-10-5	0.02 µg/l	0.01 mg/kg	ND	N/A
1,2,3,4-Tetrachlorobenzene	634-66-2	0.02 µg/l	0.01 mg/kg	ND	N/A
1,2,3,5-Tetrachlorobenzene	634-90-2	0.02 µg/l	0.01 mg/kg	ND	N/A
1,2,4,5-Tetrachlorobenzene	95-94-3	0.02 µg/l	0.01 mg/kg	ND	N/A
Pentachlorobenzene	608-93-5	0.02 µg/l	0.01 mg/kg	ND	N/A
Hexachlorobenzene	118-74-1	0.02 µg/l	0.01 mg/kg	ND	N/A



SOFTLINES WASTEWATER TESTING TEST REPORT

Number: TURA190163671

Chlorotoluene	Various	0.02 µg/l	0.01 mg/kg	ND	N/A
2-Chlorotoluene	95-49-8	0.02 µg/l	0.01 mg/kg	ND	N/A
3-Chlorotoluene	108-41-8	0.02 µg/l	0.01 mg/kg	ND	N/A
4-Chlorotoluene	106-43-4	0.02 µg/l	0.01 mg/kg	ND	N/A
Dichlorotoluene	Various	0.02 µg/l	0.01 mg/kg	ND	N/A
2,3-Dichlorotoluene	32768-54-0	0.02 µg/l	0.01 mg/kg	ND	N/A
2,4-Dichlorotoluene	95-73-8	0.02 µg/l	0.01 mg/kg	ND	N/A
2,5-Dichlorotoluene	19398-61-9	0.02 µg/l	0.01 mg/kg	ND	N/A
2,6-Dichlorotoluene	118-69-4	0.02 µg/l	0.01 mg/kg	ND	N/A
3,4-Dichlorotoluene	95-75-0	0.02 µg/l	0.01 mg/kg	ND	N/A
Trichlorotoluene	Various	0.02 µg/l	0.01 mg/kg	ND	N/A
2,3,6-Trichlorotoluene	2077-46-5	0.02 µg/l	0.01 mg/kg	ND	N/A
2,4,5-Trichlorotoluene	6639-30-1	0.02 µg/l	0.01 mg/kg	ND	N/A
alpha, alpha, alpha-Trichlorotoluene	98-07-7	0.02 µg/l	0.01 mg/kg	ND	N/A
alpha,2,4-Trichlorotoluene	94-99-5	0.02 µg/l	0.01 mg/kg	ND	N/A
alpha,2,6-trichlorotoluene	2014-83-7	0.02 µg/l	0.01 mg/kg	ND	N/A
Tetrachlorotoluene	Various	0.02 µg/l	0.01 mg/kg	ND	N/A
alpha,3,4-Trichlorotoluene	102-47-6	0.02 µg/l	0.01 mg/kg	ND	N/A
alpha,alpha,2,6-Tetrachlorotoluene	81-19-6	0.02 µg/l	0.01 mg/kg	ND	N/A
alpha,alpha,alpha,2-Tetrachlorotoluene	2136-89-2	0.02 µg/l	0.01 mg/kg	ND	N/A
alpha,alpha,alpha,4-Tetrachlorotoluene	5216-25-1	0.02 µg/l	0.01 mg/kg	ND	N/A
2,3,4,5,6-Pentachlorotoluene	877-11-2	0.02 µg/l	0.01 mg/kg	ND	N/A

Remark: ND = Not detected or result less than limit

5. Chlorophenols

With reference to US EPA 8270D and by Gas Chromatography-Mass Spectrometry (GC-MS) analysis.

Chemical substances	CAS no.	Reporting limit (Wastewater)	Reporting Limit (Sludge)	Wastewater (µg/L)	Sludge (mg/kg)
Dichlorophenols (DiCP)	25167-81-1	0.5 µg/L	0.025 mg/kg	ND	N/A
2,4-Dichlorophenol	120-83-2	0.5 µg/L	0.025 mg/kg	ND	N/A
2,5-Dichlorophenol	583-78-8	0.5 µg/L	0.025 mg/kg	ND	N/A
2,6-Dichlorophenol	87-65-0	0.5 µg/L	0.025 mg/kg	ND	N/A
Pentachlorophenol (PCP)	87-86-5	0.5 µg/L	0.025 mg/kg	ND	N/A
2,3,4,6-Tetrachlorophenol	58-90-2	0.5 µg/L	0.025 mg/kg	ND	N/A
Trichlorophenol	25167-82-2	0.5 µg/L	0.025 mg/kg	ND	N/A
2,4,5-Trichlorophenol	95-95-4	0.5 µg/L	0.025 mg/kg	ND	N/A
2,4,6-Trichlorophenol	88-06-2	0.5 µg/L	0.025 mg/kg	ND	N/A



SOFTLINES WASTEWATER TESTING TEST REPORT

Number: TURA190163671

Tetrachlorophenol	25167-83-3	0.5 µg/L	0.025 mg/kg	ND	N/A
2,3,4,5-Tetrachlorophenol	4901-51-3	0.5 µg/L	0.025 mg/kg	ND	N/A
2,3,5,6-Tetrachlorophenol	935-95-5	0.5 µg/L	0.025 mg/kg	ND	N/A
2,3,6-Trichlorophenol	933-75-5	0.5 µg/L	0.025 mg/kg	ND	N/A
2,3,4-Trichlorophenol	15950-66-0	0.5 µg/L	0.025 mg/kg	ND	N/A
2,3,5-Trichlorophenol	933-78-8	0.5 µg/L	0.025 mg/kg	ND	N/A
3,4,5-Trichlorophenol	609-19-8	0.5 µg/L	0.025 mg/kg	ND	N/A
3,5- Dichlorophenol	591-35-5	0.5 µg/L	0.025 mg/kg	ND	N/A
2,3-Dichlorophenol	576-24-9	0.5 µg/L	0.025 mg/kg	ND	N/A
3,4-Dichlorophenol	95-77-2	0.5 µg/L	0.025 mg/kg	ND	N/A
3-chlorophenol	108-43-0	0.5 µg/L	0.025 mg/kg	ND	N/A
4-chlorophenol	106-48-9	0.5 µg/L	0.025 mg/kg	ND	N/A
Monochlorophenols	Various 95-57-8 108-43-0 106-48-9	0.5 µg/L	0.025 mg/kg	ND	N/A
Salts and Esters from the above mentioned Chlorophenols	Various	0.5 µg/L	0.025 mg/kg	ND	N/A

Remark: ND = Not detected or result less than limit

6. Hazardous Dyes (Banned Azo, Allergenic, Carcinogenic)

With reference to EN 14362-1/3, and by Gas Chromatographic - Mass Spectrometric (GC-MS) or and Liquid Chromatography-tandem Mass Spectrometry (LC-MS-MS) analysis.

Chemical substances	CAS no.	Reporting limit (Wastewater)	Reporting Limit (Sludge)	Wastewater (µg/L)	Sludge (mg/kg)
2,4,5-Trimethylaniline	137-17-7	0.1 µg/L	0.01 mg/kg	ND	N/A
2,4-Diaminoanisole	615-05-4	0.1 µg/L	0.01 mg/kg	ND	N/A
2,4-Diaminotoluene	95-80-7	0.1 µg/L	0.01 mg/kg	ND	N/A
2,4-Xylidine	95-68-1	0.1 µg/L	0.01 mg/kg	ND	N/A
2,6-Xylidine	87-62-7	0.1 µg/L	0.01 mg/kg	ND	N/A
2-Naphthylamine	91-59-8	0.1 µg/L	0.01 mg/kg	ND	N/A
3,3'-Dichlorobenzidine	91-94-1	0.1 µg/L	0.01 mg/kg	ND	N/A
3,3'-Dimethoxybenzidine	119-90-4	0.1 µg/L	0.01 mg/kg	ND	N/A
3,3'-Dimethyl-4,4'-diaminodiphenylmethane	838-88-0	0.1 µg/L	0.01 mg/kg	ND	N/A
3,3'-Dimethylbenzidine	119-93-7	0.1 µg/L	0.01 mg/kg	ND	N/A
4,4'-Diaminodiphenylmethane	101-77-9	0.1 µg/L	0.01 mg/kg	ND	N/A
4,4'-Methylene-bis(2-chloroaniline)	101-14-4	0.1 µg/L	0.01 mg/kg	ND	N/A
4,4'-Oxydianiline	101-80-4	0.1 µg/L	0.01 mg/kg	ND	N/A
4,4'-Thiodianiline	139-65-1	0.1 µg/L	0.01 mg/kg	ND	N/A

SOFTLINES WASTEWATER TESTING TEST REPORT

Number: TURA190163671

4-Aminobiphenyl	92-67-1	0.1 µg/L	0.01 mg/kg	ND	N/A
4-Chloroaniline	106-47-8	0.1 µg/L	0.01 mg/kg	ND	N/A
4-Chloro-o-toluidine	95-69-2	0.1 µg/L	0.01 mg/kg	ND	N/A
5-Nitro-o-toluidine	99-55-8	0.1 µg/L	0.01 mg/kg	ND	N/A
4-Aminoazobenzene	60-09-3	0.1 µg/L	0.01 mg/kg	ND	N/A
Benzidine	92-87-5	0.1 µg/L	0.01 mg/kg	ND	N/A
o-Aminoazotoluene	97-56-3	0.1 µg/L	0.01 mg/kg	ND	N/A
o-Anisidine	90-04-0	0.1 µg/L	0.01 mg/kg	ND	N/A
o-Toluidine	95-53-4	0.1 µg/L	0.01 mg/kg	ND	N/A
p-Cresidine	120-71-8	0.1 µg/L	0.01 mg/kg	ND	N/A
Carcinogenic dyes					
C.I. Acid Red 26 (C.I. 16150)	3761-53-3	0.1 µg/L	0.01 mg/kg	ND	N/A
C.I. Acid Red 114	6459-94-5	0.1 µg/L	0.01 mg/kg	ND	N/A
C.I. Acid Violet 49	1694-09-3	0.1 µg/L	0.01 mg/kg	ND	N/A
C.I. Basic Blue 26	2580-56-5	0.1 µg/L	0.01 mg/kg	ND	N/A
C.I. Basic Red 9 (C.I. 42500)	569-61-9	0.1 µg/L	0.01 mg/kg	ND	N/A
C.I. Basic Violet 1	8004-87-3	0.1 µg/L	0.01 mg/kg	ND	N/A
C.I. Basic Violet 14 (C.I. 42510)	632-99-5	0.1 µg/L	0.01 mg/kg	ND	N/A
C.I. Direct Black 38 (C.I. 30235)	1937-37-7	0.1 µg/L	0.01 mg/kg	ND	N/A
C.I. Direct Blue 6 (C.I. 22610)	2602-46-2	0.1 µg/L	0.01 mg/kg	ND	N/A
C.I. Direct Blue 15	2429-74-5	0.1 µg/L	0.01 mg/kg	ND	N/A
C.I. Direct Blue 218	28407-37-6	0.1 µg/L	0.01 mg/kg	ND	N/A
C.I. Direct Brown 95	16071-86-6	0.1 µg/L	0.01 mg/kg	ND	N/A
C.I. Direct Red 28 (C.I. 22120)	573-58-0	0.1 µg/L	0.01 mg/kg	ND	N/A
C.I. Disperse Blue 1 (C.I. 64500)	2475-45-8	0.1 µg/L	0.01 mg/kg	ND	N/A
C.I. Disperse Orange 11 (C.I. 60700)	82-28-0	0.1 µg/L	0.01 mg/kg	ND	N/A
C.I. Disperse Orange 149	85136-74-9	0.1 µg/L	0.01 mg/kg	ND	N/A
C.I. Disperse Yellow 3 (C.I. 11855)	2832-40-8	0.1 µg/L	0.01 mg/kg	ND	N/A
C.I. Solvent Yellow 1 (p-Aminoazobenzol (pure))	60-09-3	0.1 µg/L	0.01 mg/kg	ND	N/A
C.I. Solvent Yellow 2 (C.I. 11020)	60-11-7	0.1 µg/L	0.01 mg/kg	ND	N/A
C.I. Solvent Yellow 14	842-07-9	0.1 µg/L	0.01 mg/kg	ND	N/A
Lead chromate molybdate sulphate red (C.I. Pigment Red 104)	12656-85-8	1 µg/l	1 mg/kg	ND	N/A
Lead sulfochromate yellow (C.I. Pigment Yellow 34)	1344-37-2	1 µg/l	1 mg/kg	ND	N/A
Allergenic Disperse dyes					
C.I. Disperse Blue 1 (C.I. 64500)	2475-45-8	0.1 µg/L	0.01 mg/kg	ND	N/A
C.I. Disperse Blue 3 (C.I. 61505)	2475-46-9	0.1 µg/L	0.01 mg/kg	ND	N/A
C.I. Disperse Blue 7 (C.I. 62500)	3179-90-6	0.1 µg/L	0.01 mg/kg	ND	N/A
C.I. Disperse Blue 26 (C.I. 63305)	3860-63-7	0.1 µg/L	0.01 mg/kg	ND	N/A



SOFTLINES WASTEWATER TESTING TEST REPORT

Number: TURA190163671

C.I. Disperse Blue 35 (mixture)	12222-75-2	0.1 µg/L	0.01 mg/kg	ND	N/A
C.I. Disperse Blue 35 (Component 1)	56524-77-7	0.1 µg/L	0.01 mg/kg	ND	N/A
C.I. Disperse Blue 35 (Component 2)	56524-76-6	0.1 µg/L	0.01 mg/kg	ND	N/A
C.I. Disperse Blue 102	12222-97-8	0.1 µg/L	0.01 mg/kg	ND	N/A
C.I. Disperse Blue 106	12223-01-7	0.1 µg/L	0.01 mg/kg	ND	N/A
C.I. Disperse Blue 124	61951-51-7	0.1 µg/L	0.01 mg/kg	ND	N/A
C.I. Disperse Brown 1	23355-64-8	0.1 µg/L	0.01 mg/kg	ND	N/A
C.I. Disperse Orange 1 (C.I. 11080)	2581-69-3	0.1 µg/L	0.01 mg/kg	ND	N/A
C.I. Disperse Orange 3 (C.I. 11005)	730-40-5	0.1 µg/L	0.01 mg/kg	ND	N/A
C.I. Disperse Orange 37 / 59 / 76 (C.I. 11132)	13301-61-6	0.1 µg/L	0.01 mg/kg	ND	N/A
C.I. Disperse Orange 149	85136-74-9	0.1 µg/L	0.01 mg/kg	ND	N/A
C.I. Disperse Red 1 (C.I. 11110)	2872-52-8	0.1 µg/L	0.01 mg/kg	ND	N/A
C.I. Disperse Red 11 (C.I. 62015)	2872-48-2	0.1 µg/L	0.01 mg/kg	ND	N/A
C.I. Disperse Red 17 (C.I. 11210)	3179-89-3	0.1 µg/L	0.01 mg/kg	ND	N/A
C.I. Disperse Yellow 1 (C.I. 10345)	119-15-3	0.1 µg/L	0.01 mg/kg	ND	N/A
C.I. Disperse Yellow 3 (C.I. 11855)	2832-40-8	0.1 µg/L	0.01 mg/kg	ND	N/A
C.I. Disperse Yellow 9 (C.I. 10375)	6373-73-5	0.1 µg/L	0.01 mg/kg	ND	N/A
C.I. Disperse Yellow 23 (C.I. 26070)	6250-23-3	0.1 µg/L	0.01 mg/kg	ND	N/A
C.I. Disperse Yellow 39	12236-29-2	0.1 µg/L	0.01 mg/kg	ND	N/A
C.I. Disperse Yellow 49	54824-37-2	0.1 µg/L	0.01 mg/kg	ND	N/A

Remark: ND = Not detected or result less than limit

7. Brominated, Chlorinated and other Flame Retardants

With reference to US EPA 8270, ISO 22032, US EPA 527, EPA 8321B, and by Gas Chromatography - Mass Spectrometry (GC-MS) analysis and Liquid Chromatography-tandem Mass Spectrometry (LC-MS-MS) analysis.

Chemical substances	CAS no.	Reporting limit (Wastewater)	Reporting Limit (Sludge)	Wastewater (µg/L)	Sludge (mg/kg)
Polybromobiphenyls (PBBs)	59536-65-1	0.05 µg/L	0.03 mg/kg	ND	N/A
Monobromobiphenyls (MonoBB)	Various	0.05 µg/L	0.03 mg/kg	ND	N/A
Dibromobiphenyls (DiBB)	Various	0.05 µg/L	0.03 mg/kg	ND	N/A
Tribromobiphenyls (TriBB)	Various	0.05 µg/L	0.03 mg/kg	ND	N/A
Tetrabromobiphenyls (TetraBB)	Various	0.05 µg/L	0.03 mg/kg	ND	N/A
Pentabromobiphenyls (PentaBB)	Various	0.05 µg/L	0.03 mg/kg	ND	N/A
Hexabromobiphenyls (HexaBB)	Various	0.05 µg/L	0.03 mg/kg	ND	N/A
Heptabromobiphenyls (HeptaBB)	Various	0.05 µg/L	0.03 mg/kg	ND	N/A
Octabromobiphenyls (OctaBB)	Various	0.05 µg/L	0.03 mg/kg	ND	N/A

SOFTLINES WASTEWATER TESTING TEST REPORT

Number: TURA190163671

Nonabromobiphenyls (NonaBB)	Various	0.05 µg/L	0.03 mg/kg	ND	N/A
Decabromobiphenyl (DecaBB)	13654-09-6	0.05 µg/L	0.03 mg/kg	ND	N/A
Polybrominated diphenyl ethers (PBDEs)	Various	0.05 µg/L	0.03 mg/kg	ND	N/A
Monobromodiphenylethers (MonoBDEs)	Various	0.05 µg/L	0.03 mg/kg	ND	N/A
Dibromodiphenylethers (DiBDEs)	Various	0.05 µg/L	0.03 mg/kg	ND	N/A
Tribromodiphenylethers (TriBDEs)	Various	0.05 µg/L	0.03 mg/kg	ND	N/A
Tetrabromodiphenylethers (TetraBDEs)	Various 40088-47-9	0.05 µg/L	0.03 mg/kg	ND	N/A
Pentabromodiphenylethers (PentaBDEs)	Various 32534-81-9	0.05 µg/L	0.03 mg/kg	ND	N/A
Hexabromodiphenylethers (HexaBDEs)	Various 36483-60-0	0.05 µg/L	0.03 mg/kg	ND	N/A
Heptabromodiphenylethers (HeptaBDEs)	Various 68928-80-3	0.05 µg/L	0.03 mg/kg	ND	N/A
Octabromodiphenylethers (OctaBDEs)	Various 32536-52-0	0.05 µg/L	0.03 mg/kg	ND	N/A
Nonabromodiphenylethers (NonaBDEs)	Various 63936-56-1	0.05 µg/L	0.03 mg/kg	ND	N/A
Decabromodiphenylether (DecaBDE)	1163-19-5	0.05 µg/L	0.03 mg/kg	ND	N/A
Tri-(2,3-dibromopropyl)phosphate (TRIS)	126-72-7	0.5 µg/L	0.25 mg/kg	ND	N/A
Tris(2-chlorethyl)phosphate (TCEP)	115-96-8	0.05 µg/L	0.25 mg/kg	ND	N/A
Hexabromocyclododecane (HBCDD) and all main diastereomeres identified (alpha-, beta-, gamma-)	3194-55-6 134237-50-6 134237-51-7 134237-52-8 25637-99-4	0.5 µg/L	0.25 mg/kg	ND	N/A
3,5,3',5'-Tetrabromo-bisphenol A (TBBA)	79-94-7	0.5 µg/L	0.25 mg/kg	ND	N/A
Bis(2,3-dibromopropyl)phosphate (BIS)	5412-25-9	0.5 µg/L	0.25 mg/kg	ND	N/A
Other Flame retardants					
Tris(1,3-dichlorisopropyl)phosphat (TDCPP)	13674-87-8	0.5 µg/L	0.25 mg/kg	ND	N/A
Tris-(aziridiny)-phosphin oxide (TEPA)	545-55-1	0.5 µg/L	0.25 mg/kg	ND	N/A
Flame retardants which contain toxic metals like antimony or arsenic	Various	0.5 µg/L	0.25 mg/kg	ND	N/A

SOFTLINES WASTEWATER TESTING TEST REPORT

Number: TURA190163671

Boric acid* ¹	10043-35-3 11113-50-1	0.5 µg/L in boron	0.25 mg/kg	96	N/A
Diboron trioxide* ¹	1303-86-2	0.5 µg/L in boron	0.25 mg/kg	54	N/A
Disodium tetraborate, anhydrous* ¹	1303-96-4 1330-43-4 12179-04-3	0.5 µg/L in boron	0.25 mg/kg	73	N/A
Tetraboron disodium heptaoxide, hydrate* ¹	12267-73-1	0.5 µg/L in boron	0.25 mg/kg	84	N/A
Antimony trioxide* ²	1309-64-4	0.5 µg/L in antimony	0.25 mg/kg	17	N/A
Tri-o-cresyl phosphate	78-30-8	0.5 µg/L	0.25 mg/kg	ND	N/A
Trixylyl phosphate	25155-23-1	0.5 µg/L	0.25 mg/kg	ND	N/A

Remark: ND = Not detected or result less than limit

*¹= Boron is analysed by ICP-MS. If the boron is detected, the result is calculated according to the "WORST CASE" and the result is reported.

*²= Antimony is analysed by ICP-MS. If the antimony is detected, the result is calculated according to the "WORST CASE" and the result is reported.

8. SCCP

With reference to US EPA 8270 and by Gas Chromatography-Mass Spectrometry (GC-MS) analysis.

Chemical substances	CAS no.	Reporting limit (Wastewater)	Reporting Limit (Sludge)	Wastewater (µg/L)	Sludge (mg/kg)
Short chained chlorinated paraffins (SCCP), C10-13	85535-84-8	0.4 µg/	0.03 mg/kg	ND	N/A
Middle chained chlorinated paraffines (MCCP)	85535-85-9	0.4 µg/L	0.03 mg/kg	ND	N/A

Remark: ND = Not detected or result less than limit

9. Chlorinated And Other Solvents

With reference to US EPA 8260B, and by Headspace Gas Chromatography Mass Spectrometric (HS-GC/MS) analysis.

Chemical substances	CAS no.	Reporting limit (Wastewater)	Reporting Limit (Sludge)	Wastewater (µg/L)	Sludge (mg/kg)
Dichloromethane	75-09-2	1 µg/L	0.3 mg/kg	ND	N/A
Trichloromethane	67-66-3	1 µg/L	0.3 mg/kg	ND	N/A
Tetrachloromethane (Carbontetrachloride) (C/M, S)	56-23-5	1 µg/L	0.3 mg/kg	ND	N/A
Chlorinated ethanes and ethenes	Various	1 µg/L	0.3 mg/kg	ND	N/A

SOFTLINES WASTEWATER TESTING TEST REPORT

Number: TURA190163671

1,2-Dichloroethane (C/M, S)	107-06-2	1 µg/L	0.3 mg/kg	ND	N/A
Trichloroethylene (C/M, S)	79-01-6	1 µg/L	0.3 mg/kg	ND	N/A
Tetrachloroethylene (C/M, S)	127-18-4	1 µg/L	0.3 mg/kg	ND	N/A
1,1,1-Trichloroethane (C/M, S)	71-55-6	1 µg/L	0.3 mg/kg	ND	N/A
1,1,1,2-Tetrachloroethane (C/M, S)	630-20-6	1 µg/L	0.3 mg/kg	ND	N/A
1,1,2,2-Tetrachloroethane (C/M, S)	79-34-5	1 µg/L	0.3 mg/kg	ND	N/A
Pentachloroethane (C/M, S)	76-01-7	1 µg/L	0.3 mg/kg	ND	N/A
1,1-Dichloroethylene (C/M, S)	75-35-4	1 µg/L	0.3 mg/kg	ND	N/A
1,2,3-Trichloropropane (C/M, S)	96-18-4	1 µg/L	0.3 mg/kg	ND	N/A
Hexachlorobutadiene (C/M, S)	87-68-3	1 µg/L	0.3 mg/kg	ND	N/A
Other VOC's					
Methyl-ethyl ketone	78-93-3	1 µg/L	0.1 mg/kg	ND	N/A
Benzene	71-43-2	1 µg/L	0.1 mg/kg	ND	N/A
Toluene	108-88-3	1 µg/L	0.1 mg/kg	ND	N/A
Ethylbenzene	100-41-4	1 µg/L	0.1 mg/kg	ND	N/A
Xylene (Co)	1330-20-7	1 µg/L	0.1 mg/kg	ND	N/A
Styrene	100-42-5	1 µg/L	0.1 mg/kg	ND	N/A
Cyclohexanone	108-94-1	1 µg/L	2 mg/kg	ND	N/A
2-Ethoxyethyl acetate	111-15-9	1 µg/L	10 mg/kg	ND	N/A
Acetophenone	98-86-2	1 µg/L	0.1 mg/kg	ND	N/A
N,N-dimethylformamide	68-12-2	1 µg/L	0.1 mg/kg	ND	N/A
1-Methyl-2-pyrrolidone (NMP)	872-50-4	1 µg/L	50 mg/kg	ND	N/A
2-phenyl-2-propanole	617-94-7	1 µg/L	0.1 mg/kg	ND	N/A
Bis(2-methoxyethyl) ether	111-96-6	1 µg/L	20 mg/kg	ND	N/A
N,N-dimethylacetamide	127-19-5	1 µg/L	20 mg/kg	ND	N/A
2-Ethoxyethanol	110-80-5	50 µg/L	-	ND	N/A
2-Methoxyethanol	109-86-4	50 µg/L	-	ND	N/A
2-methoxyethylacetate	110-49-6	50 µg/L	-	ND	N/A
2-methoxypropylacetate	70657-70-4	50 µg/L	-	ND	N/A
Phenol	108-95-2	50 µg/L	-	ND	N/A
Ethylene glycol dimethyl ether (EGDME)	110-71-4	50 µg/L	-	ND	N/A
Formamide	75-12-7	1 µg/L	20 mg/kg	ND	N/A
o-Xylene	95-47-6	1 µg/L	0.1 mg/kg	ND	N/A
m-Xylene	108-38-3	1 µg/L	0.1 mg/kg	ND	N/A

Remark: ND = Not detected or result less than limit

SOFTLINES WASTEWATER TESTING
TEST REPORT

Number: TURA190163671

10. Organotin compounds

With reference to ISO 17353, and by Gas Chromatography-Mass Spectrometry (GC-MS) analysis.

Chemical substances	CAS no.	Reporting limit (Wastewater)	Reporting Limit (Sludge)	Wastewater (µg/L)	Sludge (mg/kg)
Tetrabutyltin (TeBT)	1461-25-2	0.1 µg/L	0.1 mg/kg	ND	N/A
Tributyltin (TBT)	Various	0.1 µg/L	0.1 mg/kg	ND	N/A
Dibutyltin (DBT)	Various 683-18-1	0.1 µg/L	0.1 mg/kg	ND	N/A
Monobutyltin (MBT)	Various	0.1 µg/L	0.1 mg/kg	ND	N/A
Triphenyltin (TPhT)	Various 668-34-8	0.1 µg/L	0.1 mg/kg	ND	N/A
Diphenyltin (DPHT)	Various 1011-95-6	0.1 µg/L	0.1 mg/kg	ND	N/A
Dioctyltin (DOT)	Various	0.1 µg/L	0.1 mg/kg	ND	N/A
Monooctyltin (MOT)	Various	0.1 µg/L	0.1 mg/kg	ND	N/A
Tricyclohexyltin (TCyHT)	Various	0.1 µg/L	0.1 mg/kg	ND	N/A
Tripropyltin (TPrT)	Various	0.1 µg/L	0.1 mg/kg	ND	N/A
Tetraethyltin (TeET)	597-64-8	0.1 µg/L	0.1 mg/kg	ND	N/A
Bis(tributyltin) oxide (TBTO)	56-35-9	0.1 µg/L	0.1 mg/kg	ND	N/A
Dibutyltin hydrogen borate	75113-37-0	0.1 µg/L	0.1 mg/kg	ND	N/A

Remark: ND = Not detected or result less than limit

11. Perfluorinated Compounds (PFCs)

With reference to DIN 38407-42 (modified), and Liquid Chromatography-tandem Mass Spectrometry (LC-MS-MS) analysis and Gas Chromatography-Mass Spectrometry (GC-MS) analysis.

Chemical substances	CAS no.	Reporting limit (Wastewater)	Reporting Limit (Sludge)	Wastewater (µg/L)	Sludge (mg/kg)
Perfluorobutanoic Acid (PFBA) and salts	Various 375-22-4	0.01 µg/L	0.001 mg/kg	ND	N/A
Perfluoropentanoic Acid (PFPeA) and salts	Various 2706-90-3	0.01 µg/L	0.001 mg/kg	ND	N/A
Perfluorohexanoic Acid (PFHxA) and salts	Various 307-24-4	0.01 µg/L	0.001 mg/kg	ND	N/A
Perfluoroheptanoic Acid (PFHpA) and salts	Various 375-85-9	0.01 µg/L	0.001 mg/kg	ND	N/A



SOFTLINES WASTEWATER TESTING TEST REPORT

Number: TURA190163671

HPFHpA, and salts	Various 1546-95-8	0.01 µg/L	0.001 mg/kg	ND	N/A
Perfluorooctanoic Acid (PFOA),salts	Various 335-67-1	0.01 µg/L	0.001 mg/kg	ND	N/A
PF-3,7-DMOA, and salts	Various 172155-07-6	0.01 µg/L	0.001 mg/kg	ND	N/A
Perfluorononanoic Acid (PFNA) and salts	Various 375-95-1	0.01 µg/L	0.001 mg/kg	ND	N/A
Perfluorodecanoic Acid (PFDA) and salts	Various 335-76-2	0.01 µg/L	0.001 mg/kg	ND	N/A
Perfluoroundecanoic Acid (PFUnDA) and salts	Various 2058-94-8	0.01 µg/L	0.001 mg/kg	ND	N/A
4HPFUnA, and salts	Various 34598-33-9	0.01 µg/L	0.001 mg/kg	ND	N/A
Perfluorododecanoic Acid (PFDoA) and salts	Various 307-55-1	0.01 µg/L	0.001 mg/kg	ND	N/A
Perfluorotridecanoic Acid (PFTrDA) and salts	Various 72629-94-8	0.01 µg/L	0.001 mg/kg	ND	N/A
Perfluorotetradecanoic Acid (PFTeDA) and salts	Various 376-06-7	0.01 µg/L	0.001 mg/kg	ND	N/A
Perfluorobutansulfonate (PFBS) and salts	Various 375-73-5 59933-66-3	0.01 µg/L	0.001 mg/kg	ND	N/A
Perfluorohexansulfonate (PFHxS) and salts	Various 355-46-4	0.01 µg/L	0.001 mg/kg	ND	N/A
Perfluoroheptansulfonate (PFHpS) and salts	Various 375-92-8	0.01 µg/L	0.001 mg/kg	ND	N/A
Perfluorooctansulfonate (PFOS) and salts	Various 1763-23-1	0.01 µg/L	0.001 mg/kg	ND	N/A
1H,1H,2H,2H-PFOS, and salts	Various 27619-97-2	0.01 µg/L	0.001 mg/kg	ND	N/A
Perfluoroectansulfonylfluorid (PFOSF)	307-35-7	0.01 µg/L	0.001 mg/kg	ND	N/A
Perfluoro-1-octanesulfonamide (PFOSA)	754-91-6	0.1 µg/L	0.01 mg/kg	ND	N/A
N-methylperfluoro-1- octanesulfonamide (N-MeFOSA)	31506-32-8	0.1 µg/L	0.01 mg/kg	ND	N/A
N-ethylperfluoro-1- octanesulfonamide (N-EtFOSA)	4151-50-2	0.1 µg/L	0.01 mg/kg	ND	N/A

SOFTLINES WASTEWATER TESTING
TEST REPORT

Number: TURA190163671

2-(N-methylperfluoro-1-octansulfonamido)-ethanol (N-MeFOSE)	24448-09-7	0.1 µg/L	0.01 mg/kg	ND	N/A
2-(N-ethylperfluoro-1-octansulfonamido)-ethanol	1691-99-2	0.1 µg/L	0.01 mg/kg	ND	N/A
Perfluorodecansulfonate (PFDS) and salts	Various 335-77-3	0.01 µg/L	0.001 mg/kg	ND	N/A
1H,1H,2H,2H-perfluoro-1-hexanol (4:2 FTOH)	2043-47-2	0.1 µg/L	0.01 mg/kg	ND	N/A
1H,1H,2H,2H-perfluoro-1-octanol (6:2 FTOH)	647-42-7	0.1 µg/L	0.01 mg/kg	ND	N/A
1H,1H,2H,2H-perfluoro-1-decanol (8:2 FTOH)	678-39-7	0.1 µg/L	0.01 mg/kg	ND	N/A
1H,1H,2H,2H-perfluoro-1-dodecanol (10:2 FTOH)	865-86-1	0.1 µg/L	0.01 mg/kg	ND	N/A
1H,1H,2H,2H-perfluorooctylacrylate (6:2 FTAC)	17527-29-6	0.1 µg/L	0.01 mg/kg	ND	N/A
1H,1H,2H,2H-perfluorodecylacrylate (8:2 FTAC)	27905-45-9	0.1 µg/L	0.01 mg/kg	ND	N/A
1H,1H,2H,2H-perfluorododecylacrylate (10:2 FTAC)	17741-60-5	0.1 µg/L	0.01 mg/kg	ND	N/A

Remark: ND = Not detected or result less than limit

12. Phthalates

With reference to US EPA 8270D, ISO 18856 and by Gas Chromatography-Mass Spectrometry (GC-MS) analysis.

Chemical substances	CAS no.	Reporting limit (Wastewater)	Reporting Limit (Sludge)	Wastewater (µg/L)	Sludge (mg/kg)
Dibutylphthalate (DBP)	84-74-2	1 µg/L	0.3 mg/kg	ND	N/A
Di-(2-ethylhexyl)phthalate (DEHP)	117-81-7	1 µg/L	0.3 mg/kg	ND	N/A
Benzylbutylphthalate (BBP)	85-68-7	1 µg/L	0.3 mg/kg	ND	N/A
Di-iso-nonylphthalate (DINP)	28553-12-0 68515-48-0	1 µg/L	0.3 mg/kg	ND	N/A
Di-n-octylphthalate (DNOP)	117-84-0	1 µg/L	0.3 mg/kg	ND	N/A
Di-iso-decyl phthalate (DiDP)	26761-40-0 68515-49-1	1 µg/L	0.3 mg/kg	ND	N/A



SOFTLINES WASTEWATER TESTING TEST REPORT

Number: TURA190163671

Di-iso-butylphthalate (DIBP)	84-69-5	1 µg/L	0.3 mg/kg	ND	N/A
Di-n-hexylphthalate (DHP)	84-75-3	1 µg/L	0.3 mg/kg	ND	N/A
Di-(2-methoxyethyl)phthalate (DMEP)	117-82-8	1 µg/L	0.3 mg/kg	ND	N/A
Di-C7-11-branched alkylphthalates (DHNUP)	68515-42-4	1 µg/L	0.3 mg/kg	ND	N/A
Dipentylphthalate (DPP)	131-18-0	1 µg/L	0.3 mg/kg	ND	N/A
Di-iso-pentylphthalate	605-50-5	1 µg/L	0.3 mg/kg	ND	N/A
Dipentylphthalate, branched and linear	84777-06-0	1 µg/L	0.3 mg/kg	ND	N/A
iso-pentyl-n-pentylphthalate	776297-69-9	1 µg/L	0.3 mg/kg	ND	N/A
Di-C6-8-branched alkylphthalates (DIHP)	71888-89-6	1 µg/L	0.3 mg/kg	ND	N/A
Di-n-propylphthalate (DPP)	131-16-8	1 µg/L	0.3 mg/kg	ND	N/A
Di-iso-octylphthalate (DIOP)	27554-26-3	1 µg/L	0.3 mg/kg	ND	N/A
Di-iso-hexylphthalate (DIHxP)	71850-09-4	1 µg/L	0.3 mg/kg	ND	N/A
Dicyclohexylphthalate (DCHP)	84-61-7	1 µg/L	0.3 mg/kg	ND	N/A
Diethylphthalate (DEP)	84-66-2	1 µg/L	0.3 mg/kg	ND	N/A
Dinonylphthalate (DNP)	84-76-4	1 µg/L	0.3 mg/kg	ND	N/A

Remark: ND = Not detected or result less than limit

13. Polycyclic aromatic hydrocarbons (PAHs)

With reference to US EPA 8270, DIN 38407-39 and by Gas Chromatography - Mass Spectrometry (GC-MS) analysis.

Chemical substances	CAS no.	Reporting limit (Wastewater)	Reporting Limit (Sludge)	Wastewater (µg/L)	Sludge (mg/kg)
Acenaphthene	83-32-9	1 ug/L	0.6 mg/kg	ND	N/A
Acenaphthylene	208-96-8	1 ug/L	0.6 mg/kg	ND	N/A
Anthracene	120-12-7	1 ug/L	0.6 mg/kg	ND	N/A
Benza[a]anthracene	56-55-3	1 ug/L	0.6 mg/kg	ND	N/A
Benza[a]pyrene	50-32-8	1 ug/L	0.6 mg/kg	ND	N/A
Benzo[b]fluoranthene	205-99-2	1 ug/L	0.6 mg/kg	ND	N/A
Benzo[ghi]perylene	191-24-2	1 ug/L	0.6 mg/kg	ND	N/A
Benzo[k]fluoranthene	207-08-9	1 ug/L	0.6 mg/kg	ND	N/A



SOFTLINES WASTEWATER TESTING
TEST REPORT

Number: TURA190163671

Chrysene	218-01-9	1 ug/L	0.6 mg/kg	ND	N/A
Dibenzo[a,h]anthracene	53-70-3	1 ug/L	0.6 mg/kg	ND	N/A
Fluoranthene	206-44-0	1 ug/L	0.6 mg/kg	ND	N/A
Fluorene	86-73-7	1 ug/L	0.6 mg/kg	ND	N/A
Indeno[1,2,3-cd]pyrene	193-39-5	1 ug/L	0.6 mg/kg	ND	N/A
Naphthalene	91-20-3	1 ug/L	0.1 mg/kg	ND	N/A
Phenanthrene	85-01-8	1 ug/L	0.6 mg/kg	ND	N/A
Pyrene	129-00-0	1 ug/L	0.6 mg/kg	ND	N/A

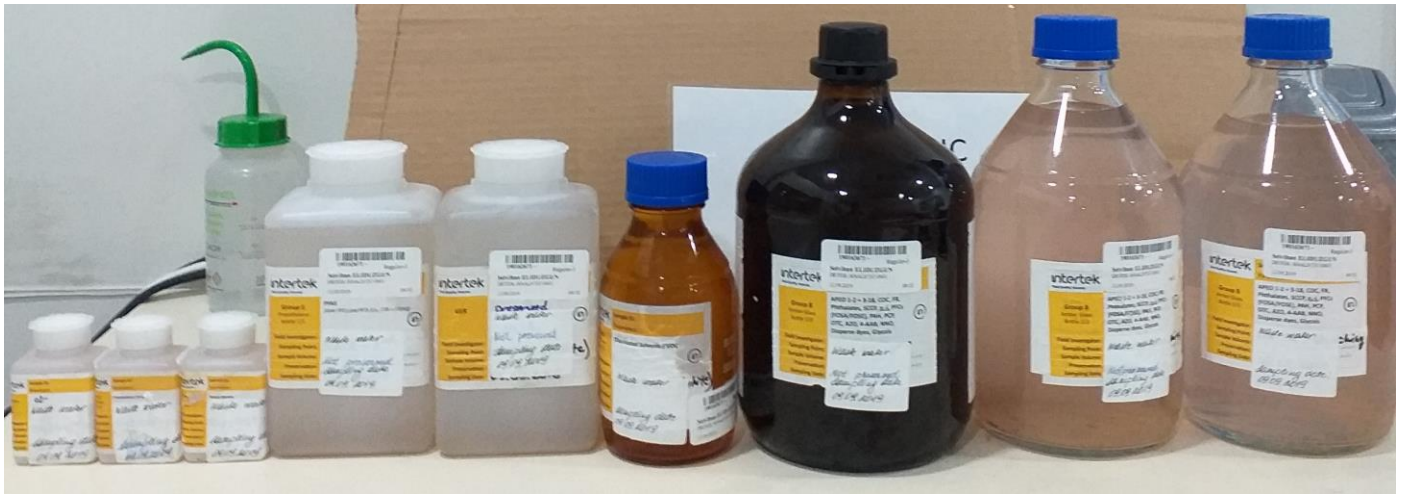
Remark: ND = Not detected or result less than limit

Testing period: From 12/ 09/ 2019 to 26/ 09/ 2019

SOFTLINES WASTEWATER TESTING
TEST REPORT

Number: TURA190163671

Photo of Samples;



End of report

This report is made solely on the basis of instructions and/or information and materials supplied by you (the Client), It is not intended to be a recommendation for any specific course of action. Intertek shall not accept a duty of care or any other responsibility to any person other than the Client in respect of this report and only accepts liability to the Client insofar as that which is expressly contained in the terms and conditions governing the provision of services to you. Intertek makes no warranties or representations either express or implied with respect to this report save as provided for in those terms and conditions. We have aimed to conduct the Review on a diligent, truthful and careful basis and we do not accept any liability to you for any direct or in-direct loss arising out of or in connection with this report, in contract, tort, by statute or otherwise, except in the event of our gross negligence or willful misconduct.

